

MAKING INCLUSIVE RESEARCH HAPPEN

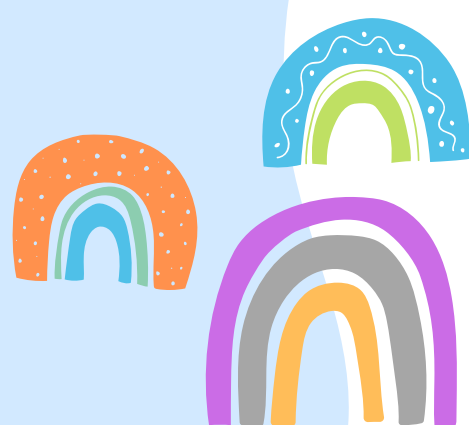
WHAT IS INCLUSIVE RESEARCH?



Inclusive research involves the people whose experiences we're learning about, by including them in decision-making in all stages of the research, from developing research materials to sharing findings with others. In the Pathways to Belonging (P2B) inclusive research team, we partnered with people with lived experience to make decisions about the study from start to finish.

WHY IS IT IMPORTANT?

Inclusive research ensures that the views and ideas of the people we interview can help shape and impact the research! This means our research can show diverse, lived experiences.



WHO IS ON OUR INCLUSIVE RESEARCH TEAM?

- Young adults with intellectual and developmental disabilities (IDD)
- Family members of young adults
- Staff and volunteers from community organizations supporting young adults
- Students and researchers

HOW DID WE CREATE AN INCLUSIVE RESEARCH SPACE?

Our inclusive research team regularly shared their voices and opinions on the project. We met once a month so that we could work together during each stage of the research.

WHAT DID WE DO TOGETHER?

In the P2B project, project consultants:

- Developed the project logo
- Developed recruitment materials
- Developed and pilot-testing questions for participant interviews
- Looked at what participants in the study said (i.e., findings from data) and decided on ways to share findings with others

HOW CAN I FIND OUT MORE?

www.pathwaystobelonging.ca



@pathways2belong



We must hear from everyone in order to better understand which pathways work for different people – all of us, including young adults with IDD, are dependent on others especially when it comes to feeling included and like they belong – we can all provide not only individual perspectives to the project but also suggest ways to move forward together.

– Researcher/family member